



ASKING PRICE

£625,000

Montpelier Road

London, SE15 2HB

**GARETH
JAMES**

PROPERTY SUMMARY

A beautifully refurbished one-bedroom ground floor garden flat, offered chain free and finished to an exceptional standard throughout. Measuring approximately 555 sq ft, this attractive home combines period character with contemporary design, featuring elegant parquet flooring, generous proportions and a private landscaped garden.

1



1



1

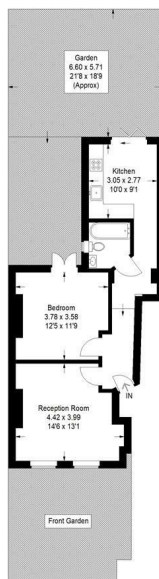






Montpelier Road, SE15

Approximate Gross Internal Area
81.6 sq m / 868 sq ft



Ground Floor

This plan is for layout guidance only. Not drawn to scale unless stated. Windows and door openings are approximate. Whilst every care is taken in the preparation of this plan, please check all dimensions, shapes and compass bearings before making any decisions reliant upon them. (D1314506)

1 |

1 |

1 |

Energy Efficiency Rating		
	Current	Potential
<i>Very energy efficient - lower running costs</i>		
(92 plus) A		
(81-91) B		
(69-80) C		
(55-68) D		
(39-54) E		
(21-38) F		
(1-20) G		
<i>Not energy efficient - higher running costs</i>		
England & Wales	EU Directive 2002/91/EC	

Agents Note: Whilst every care has been taken to prepare these particulars, they are for guidance purposes only. All measurements are approximate and are for general guidance purposes only and whilst every care has been taken to ensure their accuracy, they should not be relied upon and potential buyers/tenants are advised to recheck the measurements

GARETH JAMES	<p>OFFICE ADDRESS 129 Bellenden Road London SE15 4QY</p>	<p>OFFICE DETAILS 02077324330 sales@garethjames.com https://www.garethjames.com/</p>
-------------------------	---	--